

Human IL-15RA&IL-15 Protein

Cat. No. IL1-HM1R5

Description

Source	Recombinant Human IL-15RA&IL-15 Protein is expressed from HEK293 with His tag at the C-Terminus. It contains Ile31-Ser108(IL-15RA)&Asn49-Ser162(IL-15).
Accession	Q13261-1(IL-15RA)&P40933-1(IL-15)
Molecular Weight	The protein has a predicted MW of 23.8 kDa. Due to glycosylation, the protein migrates to 26-28 kDa&30-32 kDa based on Bis-Tris PAGE result.
Endotoxin	Less than 1EU per ug by the LAL method.
Purity	> 95% as determined by Bis-Tris PAGE > 95% as determined by HPLC

Formulation and Storage

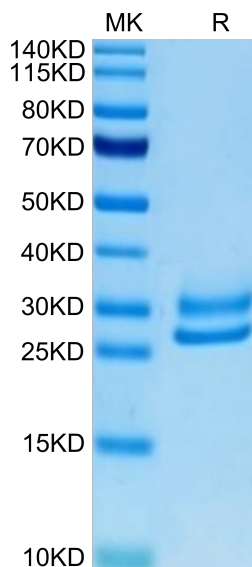
Formulation	Lyophilized from 0.22µm filtered solution in PBS (pH 7.4). Normally 8% trehalose is added as protectant before lyophilization.
Reconstitution	Centrifuge the tube before opening. Reconstituting to a concentration more than 100 µg/ml is recommended. Dissolve the lyophilized protein in distilled water.
Storage	-20 to -80°C for 12 months as supplied from date of receipt. -80°C for 3 months after reconstitution. Recommend to aliquot the protein into smaller quantities for optimal storage. Please minimize freeze-thaw cycles.

Background

Interleukin-15 receptor alpha (IL-15R alpha) is a high affinity IL-15 binding protein that is crucial for mediating IL-15 functions such as memory CD8 T cell proliferation and NK, NK/T cell, and intestinal intraepithelial lymphocyte development.

Assay Data

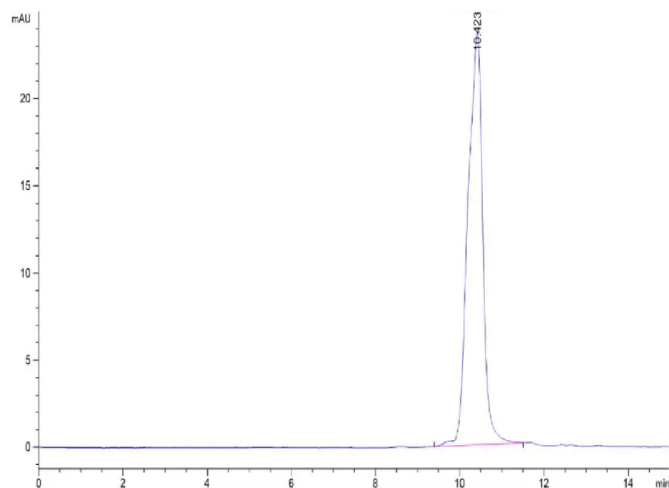
Bis-Tris PAGE



Human IL-15RA&IL-15 on Bis-Tris PAGE under reduced condition. The purity is greater than 95%.

SEC-HPLC

Assay Data

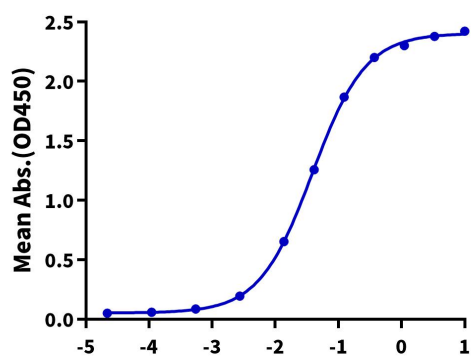


The purity of Human IL-15RA&IL-15 is greater than 95% as determined by SEC-HPLC.

ELISA Data

Human IL-15RA&IL-15, His Tag ELISA

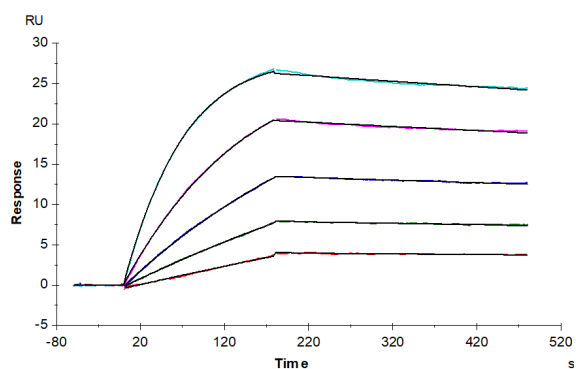
0.1µg Human IL-15Ra&IL-15, His Tag Per Well



Immobilized Human IL-15RA&IL-15, His Tag at 1µg/ml (100µl/well) on the plate. Dose response curve for Human IL-2 R beta&IL-2 R gamma, hFc Tag with the EC50 of 38.8ng/ml determined by ELISA (QC Test).

Log Human IL-2 R beta&IL-2 R gamma, hFc Tag Conc.(µg/ml)

SPR Data



Human IL-2 R beta&IL-2 R gamma, hFc Tag captured on CM5 Chip via Protein A can bind Human IL-15Ra&IL-15, His Tag with an affinity constant of 0.084 nM as determined in SPR assay (Biacore T200).